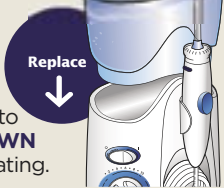


## QUICK START GUIDE

### 1 Prepare the Reservoir:

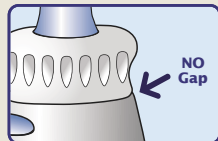
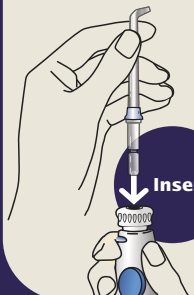


Remove the reservoir from base and fill with lukewarm water.



Replace the reservoir onto the base, **PRESSING DOWN FIRMLY** to ensure full seating.

### 2 Select and Insert Tip:



Press tip firmly into handle. When tip is properly inserted there should be no gap between control knob and handle.

### 3 Prime Unit (First Time Use Only):

#### Prior to Very First Use of Unit, Prime Unit:

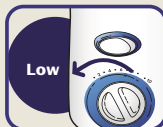
Set pressure control dial on base to **high**, point the handle and tip into sink. Turn unit **ON** until water flows from the handle, turn unit **OFF**.



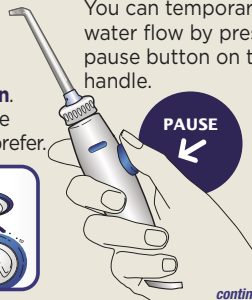
### 4 Adjust Pressure and Pause Control:

For first time users, adjust pressure control to **lowest position**.

Gradually increase pressure as you prefer.



You can temporarily stop water flow by pressing the pause button on the handle.

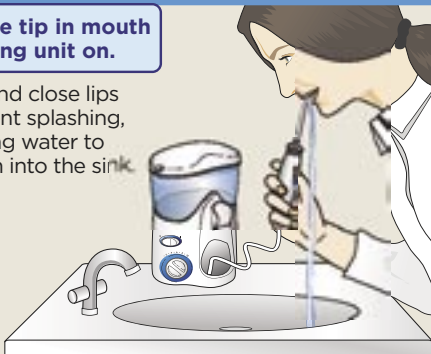


*continued on back*

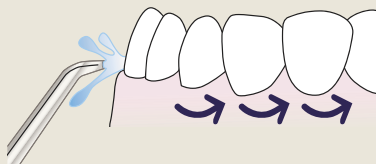
## 5 Using your Waterpik® Water Flosser:

**Always place tip in mouth before turning unit on.**

Lean over sink and close lips enough to prevent splashing, while still allowing water to flow from mouth into the sink. Turn unit **ON**.



Aim the tip just above the gumline at a 90 degree angle.

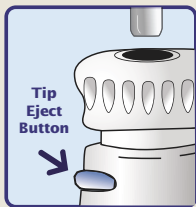
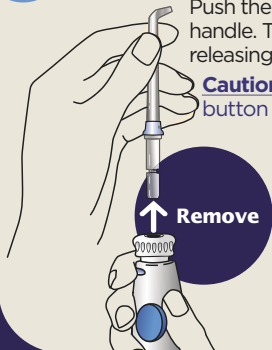


Starting with the back teeth, follow the gumline and pause briefly between teeth. Continue until all areas around and between teeth have been cleaned.

## 6 Tip Removal:

Push the tip eject button on the handle. The control knob will rise, releasing the tip. Remove the tip.

**Caution:** Do not press tip eject button while unit is running.



## 7 Need more assistance?

**Contact Customer Service**

**Reach us by phone at:**

1800 257312

**Send us an email at:**

[sales@prevident.com.au](mailto:sales@prevident.com.au)