

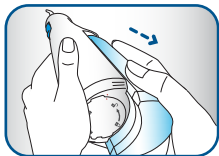
## QUICK START GUIDE

Review full instruction book prior to first use

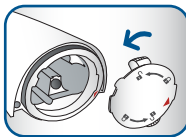
# 1

### FIRST USE

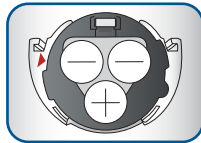
1. Remove reservoir.



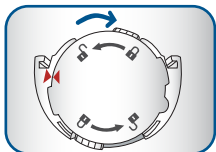
2. To remove battery door, twist, and pull.



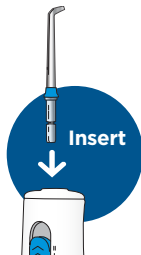
3. Insert 3 AA batteries. Included



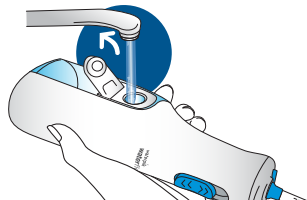
4. To replace battery door, line-up arrows, push and twist.



5. Insert tip firmly until it clicks into place.



6. Fill reservoir with warm water.



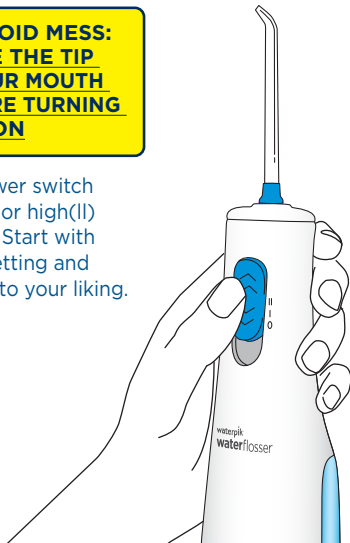
**QUICK START GUIDE**

Review full instruction book prior to first use

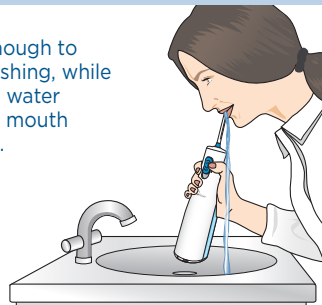
**2****START WATER FLOSSING**

**TO AVOID MESS:  
PLACE THE TIP  
IN YOUR MOUTH  
BEFORE TURNING  
UNIT ON**

Slide power switch to low(I) or high(II) position. Start with lowest setting and increase to your liking.

**3****LEAN OVER SINK**

Close lips enough to prevent splashing, while still allowing water to flow from mouth into the sink.

**4****TECHNIQUE**

Aim water at the gumline at a 90° angle. Follow the gumline and pause briefly between teeth.

