

# waterpik® waterflosser®

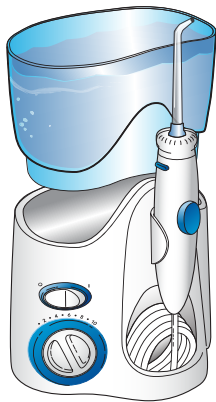
## QUICK START GUIDE

Review full instruction book prior to first use

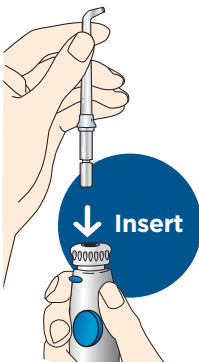
1

### FIRST USE

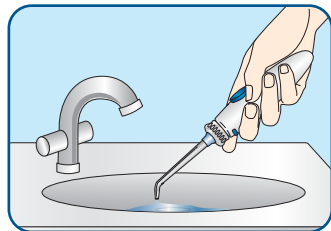
Fill reservoir with warm water and replace it firmly on the base.



Set pressure control dial on base to high, point the handle and tip into sink. Turn unit ON until water flows from tip, turn unit OFF.



Insert tip firmly until it clicks into place.



# waterpik® waterflosser®

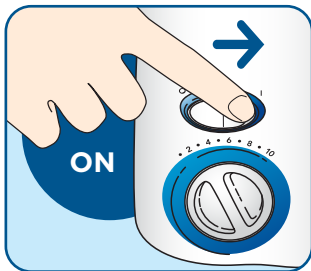
## QUICK START GUIDE

Review full instruction book prior to first use

### 2 START WATER FLOSSING

**TO AVOID MESS: PLACE THE TIP IN YOUR MOUTH BEFORE TURNING UNIT ON**

Turn power on. Start on low pressure and increase to your liking.



### 3 LEAN OVER SINK

Close lips enough to prevent splashing, while still allowing water to flow from mouth into the sink.



### 4 TECHNIQUE

Aim water at a 90° angle to your gumline. Follow the gumline and pause briefly between teeth.

