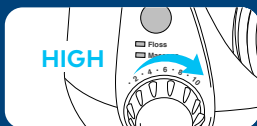
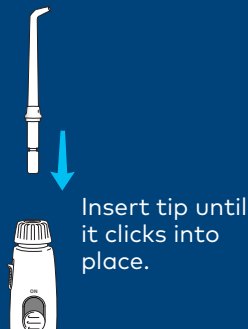
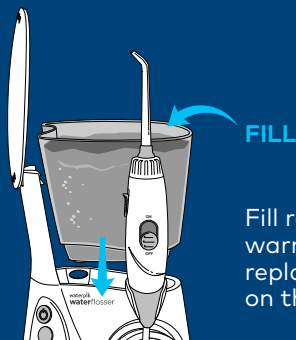


waterpik® waterflosser®

QUICK START GUIDE

WP-600 Series

1 Unit Prep



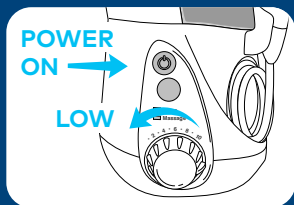
Turn pressure to high, point tip into sink, turn power and water switches ON until water flows. Turn switches OFF.

waterpik® waterflosser®

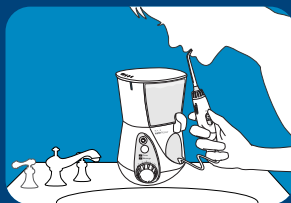
QUICK START GUIDE

WP-600 Series

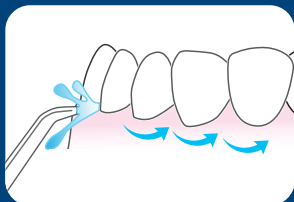
2 Water Floss



Start on low pressure.
Turn power ON.



Turn water ON. Close lips enough to prevent splashing, while still allowing water to flow from mouth into the sink. Increase pressure to your liking.



Aim water at the gumline at a 90 degree angle. Follow the gumline and pause briefly between teeth.

TO AVOID MESS: KEEP TIP IN MOUTH WHILE UNIT IS ON.