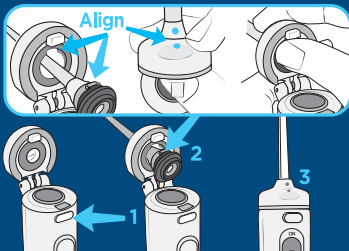


# waterpik® **WHITENING**

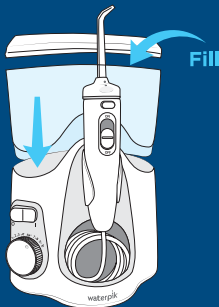
## QUICK START GUIDE

Model WF-06

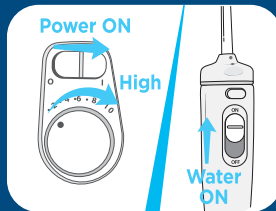
### 1 Unit Prep (First time use only)



**A.** Press button to open flip top.<sup>1</sup> Insert tip through top, align notches on tip and handle (dots on tip and flip top will align), press firmly to click tip into place.<sup>2</sup> Close flip top.<sup>3</sup>



**B.** Fill reservoir with warm water and replace it firmly on the base.



### To Prime Unit

**C.** Turn pressure to high, point tip into sink, turn power and water switches ON until water flows. Turn power and water OFF.

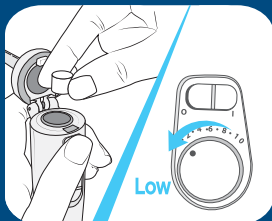
# waterpik®

WHITENING

## QUICK START GUIDE

Model WF-06

### 2 Water Floss



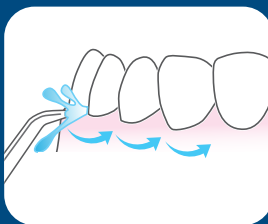
**A.** Load tablet into handle. Start on low pressure and increase to your liking.



**B.** With water switch in OFF position, place tip in mouth. Turn power ON.



**C.** Lean over sink. Turn water switch to ON position.



**D.** Aim water at the gumline at a 90 degree angle. Follow the gumline and pause briefly between teeth.

**TO AVOID MESS: KEEP TIP IN MOUTH WHILE UNIT IS ON.**