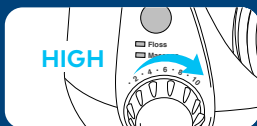
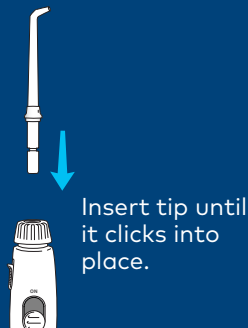
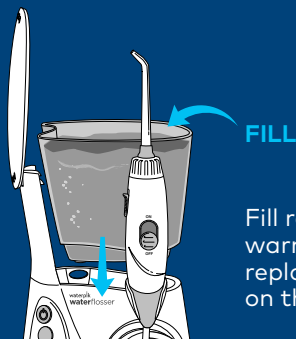


# waterpik® waterflosser®

## QUICK START GUIDE

WP-600 Series

### 1 Unit Prep



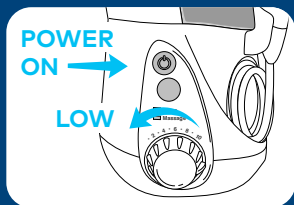
Turn pressure to high, point tip into sink, turn power and water switches ON until water flows. Turn switches OFF.

# waterpik® waterflosser®

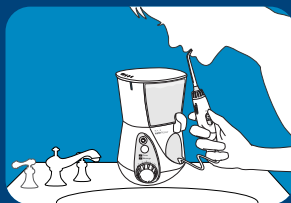
## QUICK START GUIDE

WP-600 Series

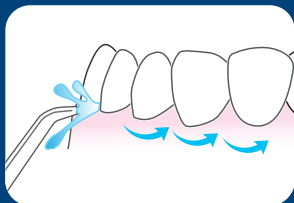
### 2 Water Floss



Start on low pressure.  
Turn power ON.



Turn water ON. Close lips  
enough to prevent splashing,  
while still allowing water to  
flow from mouth into the  
sink. Increase pressure to  
your liking.



Aim water at the gumline  
at a 90 degree angle. Follow  
the gumline and pause  
briefly between teeth.

**TO AVOID MESS: KEEP TIP IN MOUTH WHILE UNIT IS ON.**